

Annual Report 2004



# A Blanket of Support



# Jewish Family Service Agency

JFSA is a non-profit social service organization serving members of the Jewish and broader communities in the Lower Mainland. We provide resources and opportunities to strengthen and enhance the quality of life of individuals and of families. Our purpose is to serve the Jewish community. We anticipate, identify and respond to societal and community issues and to individual needs.

We are committed to:

- Jewish values, ethics and community spirit.
- High quality, accessible professional service delivered by caring staff and volunteers.
- Respect for individuals and their beliefs.
- Collaborative relationships with other agencies and organizations.



## Board Members and Staff

### 2003 - 2004 Board of Directors

---

Lani Levine  
*President*

Rick Kohn  
*President Elect*

Beverley Kort  
*Past President*

Diane Friedman  
*Treasurer*

Jill Diamond  
*Secretary*

Kristina Berman  
Izak Benbasat  
Paula Brook  
Morry Gaerber  
Fran Goldberg  
Naomi Gropper  
Dan Gumprich  
Carol Henriquez  
Jeremiah Katz  
Penny Keene  
Dan Levitt

Karen Levitt  
Judy Oberlander  
Stephen Schachter  
Heather Sirlin  
Joseph Suskin

Rabbi Ross Singer  
*RAV Appointment*

### Staff

---

Joseph Kahn-Tietz  
*Executive Director*

Selina Robinson  
*Associate Executive Director*

Daniel Peiser  
*Director of Development*

Vicki Robinson  
*Director of Seniors & Basic Needs Services*

Charlotte Katzen  
*Director of Resettlement & Vocational Services*

Jan Gronlund  
*Accountant*

Lyn York  
*Executive Assistant/  
Office Manager*

Yuval Berger  
Azima Buell  
Jacqueline Walters  
Lydia Rozental  
*Counsellors*

Malki Moskovitz  
Jessica Neville  
*School Counsellors*

Carol Oreck  
Gisi Levitt  
Susan Hilton  
Joanne Haramia  
*Seniors Outreach  
Counsellors*

Alexandra Gerson  
*Resettlement Counsellor*

Ron Goodine  
*Vocational Counsellor*

Neil Simces  
*Job Match  
Coordinator*

Debbie Havusha  
*Special Needs Coordinator*

Queenie Hamovich  
*Seniors Lunch Club  
Coordinator*

If'at Eilon-Heiber  
*Community Kitchens  
Coordinator*

Tami Amit  
*Intake & Basic Needs Case  
Manager*

Michelle Ezekiel  
*Basic Needs Coordinator*

Roger Greenberg  
*Housing Coordinator*

Shana Seskin  
*Development Assistant*

Sean Matvenko  
*Communication Coordinator*

Jean Gerber  
*Grants Coordinator*

Irina Dordjjeva  
*Administrative Assistant*



# Message from the President & Executive Director

For 68 years, the Jewish Family Service Agency (JFSA) has been providing a blanket of support for our local Jewish community in greater Vancouver. This support has evolved over time to meet the ever-expanding needs of a rapidly growing community, which now numbers nearly 30,000.

In 2003-2004, JFSA supported over 7,000 individuals in need in both the Jewish and general communities across the Lower Mainland. Programs such as emergency financial assistance, food support, and housing placement help those with the most urgent of basic needs - food, clothing, and shelter. Other services include the resettlement and integration of new immigrant families; outreach, support, and meal programs for our seniors; counselling for individuals and families in crisis; vocational guidance and job development for the unemployed and under-employed; and advocacy and support of individuals with special needs. Indeed, our mandate is both vital and broad as we attempt to stretch the blanket of community support ever further.

With 30 dedicated staff members, hundreds of devoted volunteers, and thousands of generous donors, JFSA strives to ensure that everyone in need in our community is sheltered under this blanket.

This year we launched new initiatives for greater outreach to seniors and to adults with special needs. JFSA expanded existing programs and services across departments, and our budget grew to nearly \$2 million. Our growth meant having to search for a larger home for the agency, so JFSA will continue to have the capacity to serve our growing community.

Lani Levine



A handwritten signature in black ink that reads "Lani Levine".

Joseph Kahn-Tietz



A handwritten signature in black ink that reads "Joseph Kahn-Tietz".

As you read our annual report, we hope you feel pride in your association with this wonderful agency and appreciate the comforting blanket of support that we extend together, as partners, throughout our community.

*“What do we live for, if it is not to make life less difficult for each other?”* GEORGE ELIOT

# Basic Needs Services

Requests for basic assistance remained high during this past year. A range of factors have contributed to income insecurity, including labour market restructuring, changing economic conditions and market fluctuations, changes in federal social programs, and changes in provincial policies. Together these contribute to family instability, to child and family poverty, to the burgeoning number of “working poor”, to job insecurity, to fewer full-time family friendly jobs, and to social problems associated with unemployment and poverty.

Our capacity to assist the most marginalized members of the community with food, clothing, housing and medical support increased due to the generous support of community members and funders - particularly the Combined Jewish Appeal and Jewish Immigrant Aid Society and our own JFSA Family Visionaries. Due to this increased level of support we were able to provide direct or in-kind aid to over 3000 individuals and families throughout the community.

New programs were also launched this year to help empower individuals and families to break out of the cycle of poverty. A new housing coordinator was hired and an affordable housing registry was set up, a pro-bono dental service was also developed. JFSA helped with many services and programs:

## Food Programs

- Jewish Food Bank
- Good Food Box
- Holiday Hampers
- Community Kitchens
- Food Vouchers
- Emergency Food Distribution

## Pro Bono and In-Kind Services

- Pro-Bono Legal Clinic
- Pro-Bono Dental Service

## Inclusion Programs

- Tickets to Inclusion
- Camp subsidies
- JCC subsidies
- High Holiday tickets

## *A Blanket of Shelter*



## Financial Assistance

- Direct Aid
- Holocaust Emergency
- Assistance Fund
- Seniors Medical Fund
- Anonymous Donor Fund for Emergency Relief
- Jewish Immigrant Aid Services

## Community Partners

Jewish Federation of Greater Vancouver, Yad b'Yad - The Council on Poverty, Jewish Women International, B'nai Brith Non-Sectarian Community Food Bank, Jewish Immigrant Aid Services of Canada, Mazon Canada, Peretz Institute, all Greater Vancouver synagogues, the Diamond Foundation.

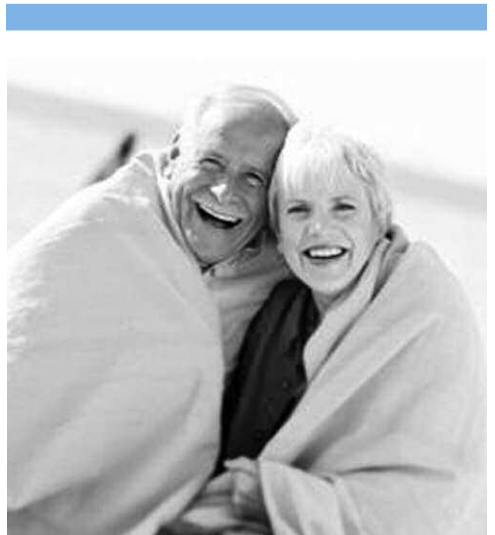
# Seniors Outreach Services

Seniors Outreach Services assisted over 500 seniors and their families to manage the difficult transitions inherent in the aging process - such as isolation, poor nutrition, loss of friends and family, loss of physical independence, residential care requirements, and financial security. With warmth and compassion, our professional counsellors and cadre of volunteers extended a helping hand to reduce seniors' isolation and help them maintain their independence at home.

Social support programs - including friendly visitors, grief support, telephone friends and Seniors Lunch Clubs, now in both Richmond and Vancouver - continue to promote connectedness to the Jewish community. In-home assessments, care planning with family members and ongoing case management established home care support systems for those in need. To ensure good nutrition, close to 4000 meals were served through the Kosher Meals-on-Wheels, Seniors Lunch Clubs and Community Kitchens programs. A new program, the Home Support Services Pilot Project, was added this year. This program matches newcomers who need Canadian experience with seniors who require assistance with activities of daily living. JFSA was there to help with our varied services:

- Outreach Services
- Case Management and Referral
- Seniors Lunch Clubs (Vancouver and Richmond)
- Kosher Meals-on-Wheels
- Community Kitchens
- Bikur Holim Hospital Visits
- Volunteer Outreach
- Grief Support Services for Widows and Widowers
- Home Support Services Pilot Project

*A Blanket of Comfort & Warmth*



## **Community Partners**

Jewish Federation of Greater Vancouver, L'Chaim Adult Day Centre, Temple Beth Tikvah, Al Polsky Golf Tournament, City of Vancouver, Vancouver Coastal Health Authority, Shalom BC, Diamond Foundation, United Way, Temple Sholom

*“The oldest trees often bear the sweetest fruit.”*

ANONYMOUS

# Resettlement & Integration Services

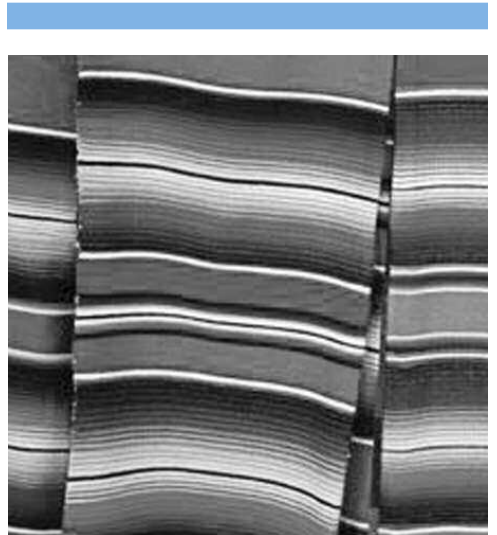
During the past year, JFSA provided Resettlement and Integration Services to nearly 150 Jewish immigrant families from all over the world - including South America, Europe, the Former Soviet Union and Israel.

We played an essential role in welcoming, integrating and assisting these families through services that range from information and referrals for ESL, camps and schools for children to intensive integration support. There are also a number of programs designed to assist newcomers and to get the local community involved, such as the Host Family Program and the Jewish Integration Council.

Advocacy was provided for those facing challenges with the immigration process, and a number of social and cultural events were hosted to help make newcomers feel at home. Pre-immigration assistance continues to be provided particularly to families in Argentina and Israel. JFSA helped welcome newcomers through:

- Household Distribution Service
- Ongoing Integration Council Projects
- Community Bus Tours
- Orientations and Cultural Events
- Most Bridge Society for Russian Seniors
- Host Family Program
- Community Kitchen for Russian Speakers
- Housing and ESL Referrals

*A Blanket of Welcome*



## **Community Partners**

Jewish Federation of Greater Vancouver, Shalom BC, Jewish Immigrant Aid Services of Canada, BC Settlement Integration Program.

*“Look for no reward in goodness but goodness itself.”*

UNKNOWN

# Vocational & Job Match Services

This past year saw JFSA provide more than 250 individuals looking for work, with Employment Services. Over 70% of these clients were placed directly into the workforce through our employer network, online job postings, or indirectly through vocational counselling services. Among our offerings were orientation to the Canadian workforce and labour standards, interview skills workshops, services for clients with disabilities and career planning for those interested in changing jobs.

JFSA also provided Job Match Services to over 70 businesses and organizations in an effort to make JFSA a primary recruiting resource to these employers. By providing a registry of job postings, generating 300+ posted vacancies in 2003-2004, 113 candidates were sent directly to employers. Employers also continue to have the opportunity to advertise their vacancies to job ready clients, who can apply to postings via the JFSA website. Over 50 people were placed directly into new jobs via this service. JFSA assists with the following services:

- Interview Skills Workshop
- Orientations to the Canadian Job Market
- Resume Writing Workshops
- Action Plan Development and Career Planning
- Online Job Match
- Job Placement & Recruitment Resources
- Training Scholarships

*A Blanket of Security*



## **Community Partners**

Jewish Federation of Greater Vancouver, Yad b'Yad - The Coalition on Poverty, VanCity.

*“I know of no more encouraging fact than the unquestionable ability of man to elevate his life by conscious endeavor.”*

HENRY DAVID THOREAU

# Counselling Services

Our Counselling Department continued to provide affordable counselling services to the community. We have provided over 1200 hours of direct service to individuals, couples and families through our fee-for-service program. This year was also a year of expansion, as JFSA:

- Increased outreach efforts and needs assessment for gay, lesbian, transgender and bisexual Jews.
- Launched an outreach bereavement program for the Jewish community; including delivery of Comfort Kits, follow up support and counselling and Jewish Widows Support Group in collaboration with Louis Brier Home and Hospital.
- Increased JFSA School Counselling Services to Vancouver Hebrew Academy
- Introduced JFSA School Counselling Services to Vancouver Talmud Torah Elementary School

We continued efforts in our established community development and outreach programs:

- ASTEH, a kosher safe house for women and children leaving abusive situations, is fully operational with the assistance of Jewish Women International
- The Jewish Teen Initiative, a collaborative project with the Jewish Community Centre of Greater Vancouver and Jewish Federation of Greater Vancouver and Jewish Education Service of North America, has completed the comprehensive needs assessment and the results will be reported in late 2004

## *A Blanket of Support*



### **Community Partners**

Jewish Women International, Jewish Community Centre of Greater Vancouver, Jewish Federation of Greater Vancouver, Louis Brier Home & Hospital, Jewish Community Foundation, Jewish Education Service of North America

*“Look after me and I’ll look after you.”*

TALMUD, BAVA METZI'A



# Special Needs Department

The Special Needs Department continues to touch the lives of Jewish adults with special needs, as members of the Jewish community, through the VIP (Very Important Partners) program. The VIP program enables adults with special needs to volunteer in our community. JFSA collaborates with the Isaac Waldman Jewish Public Library, Louis Brier Home and Hospital and the Weinberg Residence for the Books to Go program.

Books to Go is a joint project between JFSA and the Isaac Waldman Jewish Public Library, with funding from the Jewish Federation of Greater Vancouver. Dedicated VIP volunteers bring books from the Isaac Waldman Jewish Public Library to the Louis Brier Home and Hospital and Weinberg Residence.

VIP's second project began in 2004, the Comfort Kit Project. Small crates containing foods, words of comfort, candles, and prayers are given to families after the death of a loved one. Comfort Kits are assembled and delivered by a devoted group of VIP's. The Isaac Waldman Jewish Public Library offers a free one-year membership that is also included in the kit.

A third program, currently under development, is called Canes Enable, which will provide volunteers with exciting job skill training opportunities in painting and selling canes. This is being developed in partnership with local Jewish artists giving workshops to help design the canes.

JFSA's VIP Programs offer employment opportunities, community partnerships and a chance to give back:

- Books to Go
- Comfort Kits
- Canes Enable

*A Blanket for Everyone*



## **Community Partners**

Isaac Waldman Jewish Public Library, Jewish Community Centre of Greater Vancouver, Louis Brier Home & Hospital, Jewish Federation of Greater Vancouver, Crate Ideas, Dan-D-Market and Kosher Food Warehouse, Omnitsky Kosher BC, Weinberg Residence, Jewish Community Foundation, Chevra Kaddisha (Jewish Burial Society), Yosef Wosk, Marcia and Gerry Vineberg

*“The first step toward change is awareness.  
The second step is acceptance.”*

NATHANIEL BRANDEN

# Endowments

Abe & Elaine Charkow Endowment Fund for Immigrant Services

Alvin & Ellen Cohen Family Fund

B'nai B'rith Endowment Fund

Barry Corrin Endowment Fund

Community Endowment for Poverty Relief

Harvey & Jody Dales Family Endowment Fund

Ben & Esther Dayson Endowment Fund

DeLange Endowment Fund

Diamond Family Endowment Fund

Dorothy Freedman Endowment Fund

Martin Gerber Endowment Fund

John Grot Memorial Endowment Fund

Edwina & Paul Heller Endowment Fund

Jewish Family Service Agency Endowment Fund

Jewish Family Service Agency Fund

Len & Mollie Korsch Family Endowment Fund

Katz Family Endowment Fund for JFSA

Fanny, Sylvia & Etta Keel Endowment Fund

Mick & Tilly Lawrence Endowment Fund

Bonnie Lerman Children's Endowment Fund

Isabelle Lever Endowment Fund

Sarah Lipovsky Endowment Fund

Naimark Family Endowment Fund

Annette Rothstein Endowment Fund

Greg & Melanie Samuels Family Endowment Fund

Phyliss & Irving Snider Endowment Fund

Max & Kay Walters Family Endowment Fund

Jack Wolfe Endowment Fund

Mordehai & Chana Wosk Family Endowment Fund

Garry & Liz Zlotnik Family Endowment Fund

# Grants, Foundations & Community Support

B'nai Brith Non-Sectarian Community Food Bank

City of Vancouver

Claims Conference Successor Organization

Conference on Jewish Material Claims

Diamond Foundation

Jewish Community Foundation

Jewish Education Service of North America

Jewish Federation of Greater Vancouver

Jewish Immigrant Aid Society

Jewish Women International

Jewish War Veterans of Canada

Law Foundation of BC

Lohn Foundation

Mazon Canada

Ministry of Multiculturalism

National Council of Jewish Women

Al Roadburg Foundation

United Way of the Lower Mainland

Vancouver Coastal Health Authority

VanCity Community Foundation Vancouver

Vancouver Foundation

# Donors

## FAMILY VISIONARY

Samuel and Frances Belzberg  
Sydney Belzberg  
Harvey and Jody Dales  
Charles and Isabelle Diamond  
Diamond Foundation  
Gordon and Leslie Diamond  
Jill Diamond and Andrew Abramowich  
Sidney and Marie Doduck  
Barry Dunner and Su T. Fitterman  
Estate of Minnie Belzberg  
Arnold and Susan Fine  
Herbert and Shirley Fitterman  
Howard and Phyllis Gerber  
Barry and Lauri Glotman  
Geoffrey and Myriam Glotman  
George Gordon  
Harry Gordon  
Lorne Greenberg and Esther Chetner  
Brent James and Deborah Youngson  
Adrian Levy and Elizabeth Schatz  
Lohn Foundation - Jack Kowarsky  
Jack Lutsky and Susan Mendelson  
Peter and Shari Lutsky  
Morton Holdings (Byron Aceman, Norm and Lola Pawer, David and Shelley Ail)  
Lola Roadburg  
Abe and Leyla Sacks  
Saunder and Marlee Sheinin  
Julian Smith  
Naomi Wolfe

## VISIONARY

Valeriy Arustamov and Iryna Likholatnikova  
Jack Austin and Natalie Freeman  
Gary and Diane Averbach  
Steve Barer and Susan Albersheim  
Allan and Bonnie Belzberg  
Michael and Kristina Berman  
Leon Broitman  
Barry and Marsha Brovender  
Collins Barrow and Gordon Duff  
Ben and Esther Dayson  
Craig and Carrie Diamond  
Arthur and Judith Dodek  
Mannie and Armelle Druker  
Sam Feldman and Janet York  
Michael Fellman

Norman and Marlene Franks  
Michael and Kathi Fugman  
Edgar and Marilyn Gaerber  
Morry and Leana Gaerber  
Stephen and Shari Gaerber  
Leon and Leila Getz  
David and Clara Ginsburg  
Arlene Gladstone and Hamish Cameron  
Martin and Esther Glotman  
Irving and Evelyn Goldenberg  
Walter and Lois Gumprich  
Eric Hassall  
Michael and Sandra Hayden  
Paul and Edwina Heller  
Bud and Cheryl Herman  
Joseph and Joyce Herman  
Mark and Alana James  
Bill and Sharene Jansen  
Evelyn Kahn  
Andrew and Roma Katz  
Brian and Tammi Kerzner  
Beverley Kort and Ray Schachter  
Sol and Shirley Kort  
Jack and Roslyn Kunin  
David Landsberg and Tamara Shenkier  
Ivor and Gaynor Levin  
William and Risa Levine  
Stephen Maloon  
Ralph Markin  
Robert Markin  
Bradley and Peppa Martin  
George and Dani Mate  
David and Toby Morantz  
Rochelle Moss  
David Panar and Bernice Goldberg  
David Paperny and Audrey Mehler  
Sylvia Polsky  
Michael Potter and Naomi Voss  
Geoffrey and Jane Remocker  
Howard and Donna Riback  
Richmond Country Club and Ladies Exec. Committee  
Frances Rosenberg  
Ed and Ricki Rothman  
Carl Rothschild  
Harley Rothstein and Eleanor Boyle  
Samuel and Miriam Rothstein  
David Sacks  
Aaron and Dessa Sadovnick  
Shaw Saltzberg and Paula Brook Saltzberg  
Ross and Emily Singer  
Irving and Marcia Sirlin  
Peter Suedfeld  
William and Frances Switzer

Telus Community  
Connections  
Neri and Aron Tischler  
Charles and Joanne Weinberg  
Mark Wexler and Judy Oberlander  
Ethel Wiss  
Avi Wosk  
Yosef Wosk  
Saul Wyne  
David Zack

## CHAMPION

Jack Amar and Deborah Roitberg  
Norman and Sheila Archeck  
Claude Bader  
Brian and Sidnee Bell  
Abraham Bogoch and Margaret Mullinger Bogoch  
Philip and Carol Chernov  
Constance Devine  
Reva and Al Dexter  
Daniel and Michelle Dodek  
Avi Dolgin and Ruth Hess-Dolgin  
Louis and Marion Eisman  
Charles and Krayna Feinberg  
Michael and Michelle Fish  
Dennis and Naomi Frankenburg  
Brad Freedman and Pamela Wolfman  
David Freeman  
Thelma Friedman  
Larry and Miri Garaway  
Leon and Rose-Marie Glassman  
Harley and Karen Glesby  
Kenneth and Faye Golden  
Larry Goldenberg and Paula Gordon  
David and Tanis Goldman  
Arnold and Claire Golumbia  
Sheldon Green  
Harold and Marla Groberman  
Miriam Gropper  
Sella Heller  
David and Chela Herman  
Howard and Marjorie Isman  
Michael and Gail James  
Jewish War Veterans Of Canada  
Lynn Kagan  
Michael and Reva Kalef  
Frank and Freda Kaplan  
Howard and Rosalind Karby  
Irving and Sharon Kates  
Mel Kaushansky  
Ronald and Liese Kleinfeld  
Rick Kohn and Dana Sair  
Paul Krause and Sima

Godfrey  
Robert and Marilyn Krell  
Edwin and Susan Kroft  
Abraham and Shirley Laniado  
Jack and Libby Leshgold  
Adeera Levin and Morley Faber  
Herbert and Evelynne Loomer  
Stan and Jean Lubin  
Yale and Carole Malkin  
Rachel Mayer  
Robert Minden  
Ronald and Judith Nacht  
Elizabeth Narod  
PacBlue Digital  
Reprographics Inc.  
Joan Pinkus and Marc Levine  
Reva Potashin  
Lyll and Rosaline Pullan  
Martin and Dodi Puterman  
Susan Quastel  
Shelley Rivkin and Glenn Bullard  
Mark and Natalie Rosengarten  
Joseph and Rosalie Segal  
Shaarey Tefilah Synagogue  
Morley and Fay Shafron  
Howard and Elayne Shapron  
Simon Fraser University - "The Peak"  
Eric Sonner  
Paul and Edie Steinbok  
Renee Switzer  
The Chaim Zbar Foundation  
Arthur Toft  
John and Anna van Noordenne  
Dianne Walker  
Bob Willmot and Sharon Harowitz  
Heather Wolfe  
John and Beatrice Zack  
Juliet Zacks  
Ted Zacks and Linda Mann Zacks

## GUARDIAN

Clifford and Surella Ames  
Andre and Sheila Anzarut  
Debbie Archeck and Rob Bergida  
Peter and Shirley Barnett  
Roberta Beiser and Allan Black  
Elliot Belkin  
Rokie Bernstein  
Ken and Sally Berry  
Martin and Darcy Billinkoff  
Michael Brauer  
Bernice Braverman  
Rose Brook

# Donors

Ken and Lee Ann Bryant  
Eve Camerman  
Michael Caplan  
Melvin and Elaine Charkow  
Ellen Cohen  
Gary and Linda Cohen  
Ian Cohen and Michelle Gelfand  
Ted and Babs Cohen  
Allan and Jenny Corenblum  
William Cullen and Sandra Cohen  
Irving and Rhoda Dardick  
Chuck and Jodi Diamond  
Myron and Lorna Donner  
Aryeh and Deborah Elbaz  
Michael and Catherine Epstein  
Alan Farber and Felicia Folk  
Harvey Field  
Harry Fischer  
Lionel Fishman and Shirley Morris  
Martin and Paulette Fishman  
Nevin and Kathryn Fishman  
Stephen Fitterman  
Estelle Fogell  
Kenneth and Gail Fox  
David Frankel  
Sydney Fratkin  
Ken and Roberta Freedman  
Maureen Freedman  
Douglas and Ruth Freeman  
Diane Friedman and Mark Liedemann  
Max and Margaret Fugman  
Allen and Shari Gaerber  
William Galloway and Susan Freedman  
Lenore Garfield  
Larry Garfinkel and Sandi Karmel  
Saul and Ethel Gelfand  
Mark and Corinne Gelfer  
Danny Gelmon  
Monte and Marcy Glanzberg  
Ben and Nancy Goldberg  
Fran Goldberg  
John and Shawna Goldberg  
Myer and Reita Goldberg  
David and Catherine Golden  
Herb and Binny Goldman  
Murray Goldman  
Robert Goldstein  
Gila Golub and Mark Dwor  
Victor Gommel  
Morey Gorbach  
Abe and Doreen Grossman  
Gerry Growe and Nomi Kaplan  
Samuel Gutman  
Hafatzim  
Lawrence and Barbara Halparin

Asher and Bernice Hamer  
Bill and Minerva Harding  
Arthur and Arlene Hayes  
Richard and Carol Henriquez  
Eileen Hertzman  
Alan Hitelman  
Anne Holmes  
Jack and Evelyn Huberman  
Hydrecs Fund  
Kathleen Jones and Paul Daltrop  
Larry and Wendy Kahn  
Alan and Inga Kay  
Joseph and Irene Klein  
Ruth and Brandelle Kliman  
Morley and Myrna Koffman  
Mel Krajden and Vita Kolodny  
Sydney Kreitzman and Rahel Halabe  
Alicija Kudyba and Paul Maurer  
Lucy Laufer  
Evelyn Lazare  
Hall and Carol Leiren  
Harold and Tobi Lenett  
Gary and Barbara Letcher  
Lucien and Carole Lieberman  
Bernard Lotzkar  
Albert Mackoff  
Perry and Emmy Maerov  
Arturo and Marcela Manes  
Jerome Marburg  
Clifford Margolis  
Sam and Fraidie Martz  
Robert and Alicia Matas  
Janos and Noni Mate  
Angela Miller  
Frieda Miller and Daniel Shapiro  
Randy and Cheryl Milner  
Eli and Michelle Mina  
Max and Cyndi Mintzberg  
Saloman Mondlak and Kathy Izen-Mondlak  
Israel and Sheila Moskovitch  
Rochelle Nitikman  
Pola Nutkiewicz  
Bernard Olfman  
Jackie and Robert Osten  
Daniel Peiser  
Daniel and Trudy Pekarsky  
Ian Penn  
Lisa and Brent Pullan  
Rabbi's Discretionary Fund -  
c/o Congregation Beth Israel  
Roman and Mina Raivich  
Cynthia Ramsay  
Nan Ravvin  
Ronald and Judy Remick  
Nancy Richler  
Gary and Sheila Romalis  
William and Ruth Ross

Annette Rothstein  
Ed and Deborah Rozenberg  
Sarah Ruskin  
Stephen Schachter  
Roberto and Patricia Schwartz  
Zev and Elaine Shafran  
Charles and Elaine Shnier  
Danny and Ruthie Shugerman  
Gordon Slobin  
Robert and Ellen Silverman  
Anna Simpson  
Gordon Slobin  
Jack Sniderman  
Moshe and Isabelle Somekh  
Milton and Irit Sorokin  
Howard and Sunni Stein  
Gerald and Sheila Stern  
Gideon and Renate Stuhler  
Barry and Ronnie Tessler  
Andrew Thom and Lani Levine  
Stephen and Susan Tick  
Evelyn Ullman  
Maelor and Muriel Vallance  
Edith Vizer  
Arlaina Waisman  
Stanley Wallach  
W. Walter  
Dan and Barbara Waterman  
Mark Weintraub and Sari Zack-Weintraub  
Margret and William Wellington  
Carl and Judi Wener  
Louis and Ibolya Winkler  
Mark Winston and Susan Katz  
Keith and Ruth Wolfman  
Morris and Esther Wolinsky  
Louis Woolf  
Shirley and RJ Wosk  
Barend Zack  
Alex Zbar and Charlene Goldstein  
Jacob and Alice Zilber  
Gerry and Andrea Zimmerman  
Jay and Kim Zipursky

## ADVOCATE

Mary Adlersberg  
Morris and Arliss Altman  
Richard and Darlene Ames  
Judi Angel and Colin Mallet  
Murray and Shayla Atnikov  
Betty Averbach  
Philip and Lori Barer  
Norman and Vivien Basco  
Rodney and Hilary Benson  
Jonathan and Heather Berkowitz  
Gerald and Sheila Bermann  
Susan Bluman

Jack and Tannis Boxer  
Ronald Braunstein and Susan Harris  
Philip and Cathy Bregman  
Yale and Sandra Chernoff  
Gordon and Joyce Cherry  
David and Judy Coblin  
Michael and Claire Conrad  
Rueben Croll  
Barry and Barbara Cutler  
Tony and Ruth David  
Melvin and Geraldine Davis  
Isadore and Valerie Diamond  
Nathan Divinsky and Marilyn Goldstone  
Errol and Edna Durbach  
Joanne and Steve Emerman  
Stephen Emerman  
Sydney and Roma Feinstein  
Ben and Rose Folk  
Lenore Gelfand  
Sheila Gendis  
Norman Gladstone and Birgit Westergaard  
Derek and Marilyn Glazer  
Norman and Linda Gold  
Robert Goldberg  
Gerald Goldstein and Gail Whitley  
Dan and Barbara Grad  
Leslie Grad  
Harry and Jeanette Greenhut  
Joel and Judy Groberman  
Naomi Gropper and Daniel Steiner  
Zora Gropper  
Robert and Susan Hector  
Clyde and Martha Hertzman  
Gabriel and Shirley Hirsch  
Simma Holt  
Justice Dept Employees  
Talia Katz  
Barry and Charlotte Katzen  
Sidney and Lynn Kirson  
Jeff and Wendy Klein  
Ted and Debby Koffman  
Gordon and Debra Kopelow  
Harry and Tillie Kositsky  
Jack Krangle  
Charles Krieger and Alisa Lipson-Krieger  
Harold Krivel  
Peter and Gail Krivel-Zacks  
Gerald and Jackie Krystal  
Harold and Patricia Laimon  
Jerry and Susan Lampert  
Lyll and Cynthia Levy  
Bev Libin and Howard Reich  
Ivan and Merle Linde  
Mark and Gerri London  
Aaron and Derry Lubell  
David and Judy Mandleman  
Danna Marks and William Clark  
Gabor and Rae Mate

# Donors

Richard Menkis and Cathie Best  
Morton and Grace Mickelson  
Fred and Rose Mikelberg  
Norman and Sandra Miller  
Michael and Phyllis Moscovich  
Earl and Adele Moss  
Melvin Moss  
Michael and Joice Myers  
Leonard and Sylvia Narod  
Peter and Carol Oreck  
Clarine Ostrove  
George and Anne Ostry  
Alan and Sylvia Pelman  
Max and Leona Pinsky  
Fred and Linda Rabiner  
Maurice Raphael  
Zena Rebak  
Violet Reddy  
Larry Rice and Joanne Sheps  
Barry Rivelis and Kirsten Tisdale  
Irvin Rivkin  
George and Sally Roadburg  
Selina and Dan Robinson  
Manuel and Merle Rootman  
Helene Rosen  
Molly Ross  
Edward and Natalie Rozen  
Mark Rozenberg and Lynn Kaplan  
Daniel Rubin  
William Ruskin  
Ricardo and Ana Salomon  
Norman and Maureen Sanders  
Raphael Schapiro  
David and Esther Segal  
Perry and Shelley Seidelman  
Arnold and Nassa Selwyn  
Ezra Semach and Linda Civkin  
Anita Shafran  
Syd and Annette Shafran  
Judy Shane  
Jill Shore  
Cecil and Ruth Sigal  
Ronald and Carol Slater  
Robert and Darlene Spevakow  
Eric Stine and Eric Stine Architect Inc.  
Isaac and Ruth Stoffman  
Julius and Shelagh Stoller  
Eva Swartz  
Phil and Diane Switzer  
David and Judie Tarnow  
Bette Thompson  
Fred Tischler and Ammee Promislow  
Bluma Tischler  
Sam and Sally Veiner  
Marvin and Rita Weintraub

Brian Wener and Linda Tenenbaum  
Richard Wenner and Gail Dodek-Wenner  
Kenneth and Janet Werker  
Jermaine and Miriam White  
Norman and Barbara White  
Sam and Randi Winter  
Jeff Witten and Jane Stoller  
Myles Wolfe and Barby Solomon-Wolfe  
Alan Woolf and Lenore Aceman  
Saul Wosk  
Miriam Zbarsky  
Sam Znaimer and Lesley Stalker

## COMPANION

Arnold and Carole Abramson  
Ken and Jana Abramson  
Trudy Adelman  
Alan and Rebecca Adirim  
Carey and Myra Adirim  
Jerry and Shelley Adler  
Helen Alko  
Les and Tracy Ames  
Egon and Ria Andre  
Ronald and Brenda Appleton  
George and Linda Arato  
Mayer and Heather Aronson  
David and Valerie Asmoucha  
Michael Audain  
Michael and Claire Averbach  
Morris and Rachel Barer  
Jeffrey and Hildy Barnett  
Nathan and Amelita Batt  
Sherwin Begoun  
Irving and Tammi Belfer  
Harvey and Esther Berenbaum  
Stephen Bernstein and Lilian Wright  
Beth Hamidrash  
Congregation and Beth Hamidrash Rabbi Fund  
Werner and Ingrid Bick  
Geraldine Biely  
Maud Blitz  
Randa Bloom  
Borden Ladner Employees  
Jeremy Bowman  
Amelia Boxer  
Breakers Holdings Ltd and Art Szajman  
Bernie and Sandra Bressler  
Jack and Beverly Brezer  
Chuck Brook and Margot Paris  
Myron and Ros Calof  
Israel Chafetz  
Dorothy Chechik  
Max and Adele Chechik  
Stephen Cheikes

Merwin and Sharon Chercover  
Sheldon and Jane Cherry  
Helen Clare  
Joseph and Anita Clare  
Trudi Coblenz  
Mark and Susana Cogan  
Dan and Barbara Cohen  
Joseph and Frances Cohen  
Pearl and Sam Cohen  
Sherwin and Charlotte Cohen  
Theodore and Shirley Cohn  
Jan Cooper and Gayle Myers  
Goldie Cooperband  
Ronald and Beverley Corber  
Samuel and Marion Cotsman  
Jerry Cowan  
Marshall and Sally Cramer  
William and Billie Davids  
Richard Davidson and Gita Silver  
Charles and Dora Davis  
Sandy Davos  
Moshe Denburg  
Robert and Reesa Devlin  
Al and Dorothy Diamond  
Peter Dodek and Hella Lee  
Marni Dorfman  
Devaki Drache and Drache Foundation Ltd.  
Laila Dubinsky and Boris Wolpow  
Lillian Dworkin  
Ron Einblau and Harriet Lemer  
Jack Elson  
Joseph and Cecilia Ergas  
Morris Faigen  
Ruth Fainstein  
Joe Fayerman  
Daniel Fedder  
Pauline Fedder and Jeff Quon  
Dorothy and Allan Feldman  
Howard and Gail Feldman  
Agnes Fessler  
Jean Fiedler  
Eric Fielder and Deborah Snider  
Stuart and Rosalie Fine  
Norton and Tessie Finkelstein  
Sherold and Shirley Fishman  
Izak and Lili Folk  
Ancie Fouks  
Wendy Fouks  
Hymie and Rome Fox  
Izzy Fraeme  
Peter and Ann Fransblow  
David and Deborah Freedman  
Edith Freeman  
Stacey and Mark Friedman  
Ariela Friedmann

Ivan and Laurie Gasoi  
Ben and Barbara Gelfant  
Harry and Maxine Gelfant  
Al Gelmon  
Joe and Marion Gelmon  
Harvey and Jean Gerber  
Stephen and Esther (Bonnie) Gertsman  
David Gillanders  
Daniella Givon and Bernard Pinsky  
Hillel Goelman and Sheryl Sorokin  
Jeffrey and Deanne Goldberg  
Shelley Goldberg  
Charles and Beverley Golden  
Brian and Tiki Goldenberg  
Lila Goldin  
Paul and Claudia Goldman  
Moishe Golubchuk  
David and Lillian Goodman  
Tevy Goodman and Helen Nadel  
Harvey Graham  
Edmond and Pnina Granirer  
Dora Gray  
Sarah Green  
Diana Greenberg  
Louis and Adele Greenberg  
Louis and Miriam Grossman  
Joachim and Gaby Grubner  
Gustav and Frances Grunberg  
Valerie Gruson  
Joel Guralnick and Iris Sharir  
Gary and Gloria Gutman  
Hans and Marianne Haebler  
Samuel and Lilly Hamer  
Allan and Robyn Hanson  
Sam Hanson and Marilyn Moss  
Howard and Trudy Harowitz  
Harry and Gloria Harris  
Kitty Heller  
Stephen Herman and Evelyn Neaman  
Abraham and Anne Hersh  
Cecil and Ruth Hershler  
Mel Himel  
Rafael and Raquel Hirsch  
Art Hister and Phyllis Simon  
Peter and Cheri Hochfelder  
Alvin and Eleanor Hornstein  
Sheldon and Arlene Howard  
Bruce and Joan Howitt  
David and Rowena Huberman  
Marvin and Ruth Huberman  
Gerald and Anne Hudson  
Trevor and Dawn Hurwitz  
Jack and Shirley Hyman  
Ronald and Beverley Imerman

# Donors

Evelyn Jackson  
Simon and Raisie Jacobson  
Ralph and Barbara James  
Maurice and Saree Jarvis  
Lionel Johnson and Jane Heyman  
Mia Kalef  
Maxime Kalfon  
Basil and Selma Kallner  
Abe and Mildred Kanee  
Ken Karasick and Ramona Josephson-Karasick  
Jack and Brenda Karp  
Michael Karton and Barbara Heller  
Barry and Susan Kassen  
Lawrence and Elsie Katz  
Naomi Katz  
Stephen Katz  
Stephen and Sandra Kaye  
Shay Keil  
Robert Kemeny and Susan Jung Kemeny  
Alan Kenney and Heather Sirlin  
Henry and Irene King  
Emerich Klein  
Michael and Bonnie Klein  
David and Gerry Kline  
Leonard and Mollie Korsch  
Stanford and Seda Korsch  
Anne Krauss  
Samuel and Janine Krikler  
Louise Krivel and Paul Williams  
Jerry and Shirley Kushner  
Susan Label  
Mendy and Lana Landa  
David Lank and Constance Smith  
Morris and Tannis Lank  
Elliot Laskin  
Ronald and Estaris Laye  
Gary and Rhea Lazar  
Alan Lee  
Anna Leith  
Donna Lerner  
Irvin and Celia Lerner  
Eva Lesser  
Alan and Barbara Lever  
Joan Levi  
Shanie Levin  
Jack and Shirley Levine  
Seymour and Alberta Levitan  
Karen Levitt  
Caroline Levy  
Robert and Fanny Lewis  
Lily Liben  
Beryl Libin  
Kalmann and Alice  
Lindenberger  
David Lirenman  
Philip and Jennia Litsky  
Harley and Leslie Mackoff

Alex and Ketty Magil  
Howard Malchy  
Helen Demuth  
Stephen and Lynn Mandel  
Neil Mandleman  
Inge Manes  
Kevin Marks and Deborah Litvack  
Lynn Mathews  
Don McGregor and Kelly Korbin  
Peter Meingast  
Jack and Betty Mendelsohn  
William and Lola Mendelson  
Paul and Cheryl Meyers  
Chaim and Susie Micner  
Ya'akov Miles  
Albert and Dorothy Miller  
Anton Miller  
Marc Millman and Dorothy Shaw-Millman  
Yoram Minnes  
Lloyd and Lea Minovitch  
Ivan Moldowan  
Dawn and Rodger Nelson  
Arnold Nemetz  
Kenneth and Maureen Neuman  
Irving and Betty Nitkin  
Marty and Elaine Nixon  
Tabala Oreck  
Zoe Oreck  
Dina Orloff  
Maurice and Mona Packer  
Cathy Paperny  
Richard Parnell and Rena Cohen  
Cecil and Helen Paull  
Jack and Henia Perel  
Brina Peritz  
Will Petrook  
Hans and Anne Philipp  
PK Blustein Professional Corp  
David and Rosemary Poll  
Melvin and Reata Polsky  
Doug and Lana Pulver  
Simon Rabkin  
Robert and Lois Raphael  
Harriett Ratner  
Bernard and Mollie Reed  
Michael Reed  
Sarah Richman  
Adele Ritch  
Fran Ritch  
Helen Rittberg  
Harry and Jeanette Roitberg  
Jack and Jenny Rootman  
Jack and Shirley Rose  
Lon Rosen and Marilyn Hover Rosen  
Ben and Ruth Rosenbaum  
Richard Rosenberg and Sheryl Adam  
Elken and Doreen Rosenhek

Ralph and Vivian Rothstein  
Al Rozenberg  
Edward Rubin and Arlene Churchill-Rubin  
Maurice and Florence Salama  
Herman and Norma Saltzberg  
Devra Samson  
Moe Samuel  
Barry Sanders  
Alexander and Mona Sandomirsky  
Maurice and Bertha Schachter  
Allan and Jean Schneiderman  
Mark and Tracey Schonfeld  
Aubrey and Cynthia Schwartz  
Stanley and Shirley Schwartz  
Ralph and Elaine Schwartzman  
Gary and Nanci Segal  
Laurence and Robin Segal  
Stanley and Roberta Shapiro  
Allan and Eve Sheftel  
Cigal Shene and Ari Epstein  
Herbert and Barbara Silber  
Margaret Silberg  
Janet Silver  
David and Margaret Silvers  
Mitchell Snider  
Gordon Stahl and Heather Martin  
Lorisa Stein  
Marc and Eva Stern  
Richard and Edith Stevenson  
Ruth Stewart  
Albert and Phyllis Stoessl  
Norman and Janet Streat  
Jack and Geraldine Sugarman  
Stanley and Joycelaine Sunshine  
Tannis and Mark Tapley  
Marianne Tatar  
Temple Sholom and Rabbi Bregmans Discretionary Fund  
Lyle Thompson  
Michael and Nancy Travis  
George and Muriel Turner  
Bernard Uncyk  
Peter Uram and Barbara Whyte  
Rene and Karin Van Haren  
Vancouver Community College  
Mauritz Vanderveen and Joan Berlow  
Maurice and Helen Veno  
Oleg and Tania Vinitzky  
Robert and Gloria Waisman

Joel Wasel  
Arthur and Marilyn Weinstein  
Charles Weinstein and Susan Parr  
Ted Wenner and Zoe Wise  
Leonard and Henriette White  
Michael and Morag Whitfield  
Irvine Wolak  
Jerry and Sandra Wolfman  
Lily Wosk  
Daniel and Valerie Zack  
Philip and Judy Zack  
Judy Zaitzow  
Michael and Lianne Zaitzow  
Faye Zebberman  
Bruce and Joy Zien  
Barry and Sylvia Zimmerman  
Lillian Zimmerman  
Ronald Zisman and Elaine Reynolds  
Gertrude Zivot  
Norman Zottenberg  
Francine Zucker-Carlin and Richard Carlin

## PARTNER

Benson and Seemah Aaron  
Isidor and Belle Aaron  
Bernie and Claire Adelberg  
Minnie Aderem  
Mac and Naomi Adler  
Terry and Margaret Adler  
Ben and Rita Akselrod  
Scott Alexander and Alison Brook  
Ishak Alfandari  
David Allman  
Michael and Anette Altman  
Mory Altman and Alissa Nagy  
Freda Aqua  
Paul and Rita Bakan  
Wayne and Lori Balshin  
Gabriel and Tamar Bandel  
Nettie Barad  
Larry Barzelai and Rhona Gordon  
Alan Bass  
Alan and Maureen Bayless  
BC Transmission Corporation  
Al and Ruth Becker  
Jeffrey and Charlotte Bell  
Coleman and Faye Belogus  
Gail Belonsky  
Abraham and Eva Benjamin  
Mikhail and Bella Berezin  
Bea Berger  
David and Ruth Berger  
Tibor and Agi Bergida  
Jerry and Sylvia Berkson  
Stephen Berne and Daeniela Bheumont-Berne  
David Berson  
Beth Tikvah Congregation

# Donors

and Beth Tikvah Rabbi's Fund  
Louis and Bella Bevan  
Beyond Sound and Jordan Zwicker  
Florence Beytin  
Avi and Ellen Bick  
Charles and Raymonde Bigio  
David Bigio  
Gilles and Aida Bild  
Paul Bild  
Marvin and Francine Binder  
Stanley and Eve Blank  
Robert and Nancy Bluman  
Leonard and Sandra Bobroff  
John and Paula Boddie  
Amalia Boe  
Michael and Frida Boltiansky  
Richard Brail  
Herman and Rosa Brandt  
Joseph and Miriam Breitman  
Marilyn Bricker  
Abby and Shira Brook  
Saltzberg  
Si and Mary Jane Brown  
Ron and Martha Burnett  
Mitchell Burnstein  
Nathan Cannon  
Jack and Estelle Caplan  
Burton and Carole Chark  
Abe Charkow  
Louis and Merle Checov  
Nat Chelin  
Morris and Mona Chernov  
Sara Ciacci  
Shelley Civkin  
Elsie Coave  
Robert and Helen Coleman  
David and Sandra Crystal  
Hazel and Marcel Currie  
Susan Curtis  
Jon and Orna Danzig  
Harry and Ruth Dashevsky  
Sandie Derbyshire  
Ora Dermer  
Marian Dewitt  
Betty Divinsky  
Fanny Dodek  
Geoffrey Druker and  
Rozanne Kipnes  
Sally Druker  
David and Grace Ehrlich  
Howard Ehrlich  
Lou and Eva Elkin  
Cissie Eppel  
Mark and Sylvie Epstein  
Rosa Erlichman  
Leonor Etkin  
David and Anna Ezekiel  
Caroline Fader  
Norman and Faye Fages  
Rose and Nena Farina  
Joey and Carol Feinstein  
Denis Feldman

David and Barbara Feldstein  
Igal and Aliza Fishman  
Robert and Marthena Fitzpatrick  
Larry and Claudia Flader  
Harold Folk and Kathryn West-Folk  
Leslie and Faith Foucs  
Claire Fox  
Stan and Joi Freed-Garrod  
Mason and Myriam Freedman  
Robin and Bev Friedlander  
Carole Froese  
Helen and Alan Frome  
Fujitsu Consulting Canada Inc  
Joseph and Aranka Gabor  
Global Television Network  
Ruth Godlovitch  
Mary Gofsky  
Harry Gold  
Sheldon Goldberg and  
Debbie Kahane Goldberg  
Myra Goldman  
Ruth Gonor  
Ruth Goodman  
Sidney and Michelle Grad  
Marilynn Greene  
Marjorie Groberman  
Sorin and Paige Grunberg  
Sonia Gruson  
Henry and Julie Gutovich  
Victoria Haberer  
Ellen Hamer and Gary Richmond  
Queenie Hamovich  
Harold and Sherry Hanson  
Earl and Rosalie Hardin  
Morris and Marelynn Harowitz  
Derek and Reva Henriques  
Gregory and Zena Henriquez  
Raquel and Andrew Henry  
Dan and Reva Henslowe  
Harry and Kathy Herman  
John Hill  
Reva Hollander  
Stanley and Gail Hurwitz  
Barry Hyman and Annica Carlsson  
Michael and Pam Isman  
Jean-Jacques and Jane Israel  
Cynthia Jacobs  
Braná James  
Abe Jampolsky  
Dan Jepsen and Abbie Milavsky  
Alan and Debbie Jeroff  
Jewish Seniors Alliance  
JFSA Employees  
Howard and Simone Kallner  
Sandra Kalkmakoff and Lezlie Wagman

Juli Kamin  
Odie Kaplan  
Sam and Mona Kaplan  
Sidney and Shirley Kaplan  
David Karp  
Jonathan and Renee Katz  
Bernard Katzmman  
Mickey and Shay Keil  
Josh and Rowena Kleinman  
Harry and Mary Klonoff  
Brenda Knight  
Brad and Rhonda Kohn  
Ben and Dolly Kopelow  
Neil and Judy Kornfeld  
Brian and Ann Kramer  
Ashley Krisman  
Karen Krivel  
Merton Lechtzier  
Barbara Letcher  
Isabel Lever  
Kay Levey  
David and Alma Levi  
Donna Levi  
Yvonne Levinkind  
Ken and Leah Levitt  
Robert and Gisi Levitt  
Jack and Phyllis Lewis  
Maurice Lifchus  
Lucy and Abe Ligumsky  
Randy and Janice Ling  
London Drugs Ltd  
Joyce Lowe  
Vincent Manis  
Robert Mann  
Tzipora Mann  
Manning Elliott Employees  
Joel and Lisa Marcoe  
Richard and Judith Marcuse  
Richard Markus and Judith Setton Markus  
Rodney and Lynne Massel  
Meyer and Gail Mattuck  
Stella Mattuck  
William Maurice  
Albert and Anne Melul  
Micha Menczer  
Robert and Elke Mermelstein  
Larry and Tyla Meyer  
Randy Meyers  
Roxanne Milavsky  
Evelyn Miller  
Warren and Andrea Milman  
Marla Milrad  
Harvey and Ruth Mitchell  
David and Michal Mivasair  
Esta Mona  
Marla Morris and Alan Long  
Muriel Morris  
Sharon and Maxwell Morton  
Sandra Moussadji  
Raymond Musikansky  
Mas and Fumiko Nakade  
Hymie and Lilian Neuman  
Michael and Vicki Northy

Harvey Oberfeld  
Neil and Donna Ornstein  
William and Anita Ornstein  
Claire Osipov  
Golda Ostroff  
Pacific Newspaper Group  
Albi and Bernarda Papo  
Helen Parker  
Rose Parker  
Leon and Fay Pascall  
Sam Pearlman  
Harvey and Connie Permack  
Eleanor Perry and Sharon's Fittings  
Robert and Bev Philipp  
Charna Plottel  
David and Debbie Porte  
Hershey and Yvette Porté  
Clare Prasow  
Alf and Naomi Price  
QuestAir Technologies  
Arlene Quint  
Hindy Ratner  
Pam Ratner  
Mike Reay  
Issie and Marlene Reisler  
Lily Reshall  
Faye Rice  
Howard and Anneliese Robens  
Vicki Robinson and Nomi Fenson  
Marcel and Karola Robitschek  
Sally Rogow  
Matthew Rosen  
Joanne Rosenbaum  
George and Yvonne Rosenberg  
Rose Ross  
Mildred Rothstein  
Carla Rubin  
Michael and Janice Ruth  
Gerry Sair  
Sarah Sair  
Phillip and Estelle Sanderson  
Myra Saslaff  
Muren Schachter  
Edna Schwartz  
Geraldine Schwartz  
Barry and Drinda Scott  
Richard Sebba and Ilana Mondlak-Sebba  
Louis and Friedah Segal  
Robert Seligman  
Victor and Jennifer Setton  
Susan Shamash  
Bryan and Martina Shapiro  
Tamara Shenkier  
Harry and Vera Sher  
Leo and Anne Shimerl  
Henry Shindler  
Goldie Shore  
Cal and Ellen Shumiatcher

# Donors

Barbara Silver  
Shirley Silver  
Fannie Silvert  
Neil Simces  
Brian and Susan Simons  
Rajdeep Singh  
Michael and Victoria Smus  
Susan Sommers and Peter Geyer  
David and Geri Sorin  
Israel and Raizel Spector  
Sarah Spivack and Sima Kanen  
Issy and Francie Steen  
Irene Stein  
Moses and Esther Steinberg  
Judy and Victor Stern  
Andi Strausberg  
Ronald and Wendy Stuart  
Aron Szajman  
Sam Szajman  
Bernice Tadman  
Stan and Reena Taviss  
Lionel Tenby  
Sally Thorne  
Fred and Minnie Toft  
Bill Towers  
Steve and Wendy Turnbull  
United Way Of The Fraser Valley  
Vancouver Port Authority  
Oscar Vosberg  
Pierre and Sofia Walder  
Ken and Carla Waldman  
Judy Walker and Eric Promislow  
Cathy Wasserman  
Max and Ida Weiner  
Danyaël Weintraub  
Robert and Lillian Wenner  
Marlene Wexler  
Betty Whitley  
Madge Wiesman  
Heinz and Margery Wilke  
Eric Williams  
Violet Williams  
Stanley Winfield  
Robert and Andrea Winograd  
Manley and Ruth Wolochow  
Maxine Woogman  
Rachel Wosk  
Harold and Judy Wyne  
Brenda Yablon and Meteor Investments  
Gertrude Zack  
Angelo Zappacosta  
Rubin and Mala Zilberman  
Sally Zimmerman  
Harold and Nancy Zlotnik

## FRIEND

Art and Shirley Abrams  
Ilan and Dina Acoca

Philip and Gladys Adilman  
Susan Aizenman  
Sid and Ruth Akselrod  
Selma Albersheim  
Alexander Holburn Beaudin & Lang  
William and Mona Allister  
Ruth and Sam Allman  
Miles Alperstein and Anne Siegenberg  
William and Debby Altow  
Bruce and Merle Ames  
Abe Averbach  
Atara Avraham  
Lester and Sandy Baker  
Michael and Elena Bakst  
J.R. and Ellen Barberie  
John and Martha Barker  
Peter and Myriam Bayerthal  
BC Biomedical Labs  
Claire Belilos  
Gordon Bell  
Joel and Ilene-Jo Bellas  
Rami and Elia Belson  
Bernadette Bennett  
Marshall and Marilyn Berger  
Charlotte Berman  
Frances Berman  
David and Cheryl Berns  
Catherine Berris and Grant Chernick  
Harold and Seemah Berson  
Saul Berson and Michele Aderem  
Marni Besser  
Judith Bezerdi  
Solomon and Gita Bichin  
George and Cynthia Bluman  
B'Nei Mitzvah Club and Burquest Community Assn  
Morris and Sandi Bojm  
Alan and Lisa Boroditsky  
Jean Bortnick  
Esther and Jeremy Braude  
Martin and Janet Braverman  
Ira and Rhoda Brickell  
Paul and Diane Brosgall  
Abe and Betty Broudy  
Rick and Jo-Anne Brown  
Kay Camerman  
Emil and Elaine Campbell  
Canada Customs Employees  
Canada Helps  
Sheila Cantor  
Peter Caulfield and Associates  
Paulette Cave  
Charlens and Dhorea  
Challmie  
Sheldon and Marilyn Chandler  
Chana Charach  
Neal and Natalie Chark  
Martin and Pamela Charkow

Nora Charles  
Eleanor Charney  
Stephen Chercover  
Norman and Shirley Chess  
Anne Chick  
Child & Women's Health Centre Employees  
Chimo Employees  
Deena Chochinov and Eric Posen  
Bernard Chodos  
Citizenship & Immigration  
Estelle Civkin  
Jeffrey and Vivian Claman  
Leslie Clancy  
Coast Capital Savings Credit Union  
Robert and Ethel Coffin  
Anita and Sonny Cohen  
Reesa Cohen  
Sanford Cohen  
Saul and Sheila Cohen  
Tamar Cohen  
Lee and Sue Cohene  
Sheldon and Frances Cole  
Julian and Maureen Collis  
Esther Comisarow  
Al and Miriam Creemer  
Ken and Arlene Cristall  
Danny and Sherry Czamanski  
Ann Daskal  
Miriam Davidowicz  
Louis and Elisabeth De Uries  
Jeffrey and Lynette Dian  
Morton and Irene Dodek  
Dominion Blue  
Reprographics  
Anthony and Lynne Du Moulin  
Sarah Elias  
Moiz and Bekye Elnekave  
Barry and Myrna Epstein  
Michael and Gwen Epstein  
Norman Epstein  
Hilda Everall  
Daniel Ezekiel  
Joan Linda Fader  
Geoffrey and Stephanie Fages  
David Feldman  
Sheldon and Pearl Feldman  
Nomi Fenson  
Howard and Arlyne Fenster  
Ireta Fisher  
Sam and Ruth Flader  
Ellen Flanders  
Jennie Fouks  
Hannah Frankel  
Thelma Frankel  
Jeffrey Freedman  
Monty and Eva Freedman  
Thelma Freedman  
Bernard and Joyce Freeman

David and Yvette Freeman  
Miram Friedberg  
Desmond and Phillipa Friedland  
Diane Friedman  
Kenneth Friedman  
Martin and Michelle Gerber  
Susan Fugman  
Lily Gale  
Sadie Garaway Sherman  
Elisabeth Geller  
Laverne Gelson  
Martin and Michelle Gerber  
Michael and Tanya Gertsoy  
Frederick Glick and Paige Axelrood  
Harold and Zelda Glick  
Solly and Doreen Globman  
Joe and Karyn Gold  
Martin Goldberg  
Solomon Goldberg  
Zelda Goldberg  
Barbara Goldenberg  
William and Mona Goldman  
Ted and Molly Goodson  
Douglas and Leah Gordon  
Kathy and Morris Gordon  
Doris Gould  
Grant Thornton  
Arthur and Bessie Greenberg  
Charles and Rhoda Greenberg  
Judith and Naomi Greenberg  
Roger Greenberg  
Robyn Greenspan  
Gerrard and Halina Greenstone  
Jeffrey and Michele Groberman  
Judith Growe  
Zelma Grunspan  
Claudio and Lori Guincher  
Lito and Kela Guincher  
Dan and Barbara Gumprich  
Manfred and Corrine Gumprich  
Ricki Gutkin  
Serge and Elinor Haber  
Colin and Brenda Halliwell  
Booba Harowitz  
Keiko and Alain David Hashimoto  
Debbie and Yossi Havusha  
Howard Hendin  
Layah Herman  
Sheila Herstein  
Doreen Herzstein  
Allan Hestrin  
Dennis and Joyce Hoffman  
Carol Hollander  
Sandra Hollenberg  
Herbert Hooge  
Bernard and Marilyn Hooper  
Helen Hooper



# Donors

Michael Horowitz  
 Joyce Beatrice Horton  
 Louise Houta  
 Klara Ioffe  
 Michael and Sharon Isaacson  
 Jake Jaffe  
 Dolly Jampolsky  
 Rita Janowitz  
 Lisa Kafka  
 Peter and Deborah Kafka  
 Mindel Kagna  
 Jack and Beverly Kanee  
 Ida Kaplan  
 Sylvia and Harold Karro  
 Elsbeth Kaufmann  
 Larry Kazdan and Andrea Engel  
 Anney Keil-Soronow and Morris Soronow  
 Louise Kettleman  
 Grigori Khaskin  
 Anita Kirson  
 Sheldon Klein and Elaine Wynne  
 Terry and Carol Kline  
 Alex and Elaine Kliner  
 Mary Knopp  
 Berthold Kober  
 Freda Koffman  
 Saul Kohn  
 Natalie Kohn Weinstein  
 Al and Myrna Kolberg  
 Sharon Kositsky and Mark Fryfield  
 Rob Kraft  
 Lee Kramer  
 Ruth Kraminsky  
 Isaak and Soulamif Krasnich  
 Lee Kriger  
 Ben and Sally Kurtz  
 Leora Kuttner  
 Albert and Gillian Lagnado  
 Ruth Laird  
 Paul and Lesley Lambert  
 Langara College Employees  
 Jodi Lassner  
 Glenn Laufer and Elaine Klein  
 Gerald Lecovin  
 Marty Lemish  
 Lori Lerner  
 Sally Lesk  
 Mordechai and Seemah Levi  
 Robin and Ilana Leviton  
 Dan Levitt and Lisa Romalis  
 Inez Levitz  
 Janet Lexier  
 Saul and Annalea Libstug  
 Anatoli Linderman  
 Marvin Lithwick and Marilyn Jordan  
 Herman and Cynthia Litsky  
 Bessie and Victor Luteyn  
 Joel and Mia Mackoff  
 Rachel and Joel Mackoff

Karla Maidstone  
 Sam and Sarah Mandelbaum  
 Fannie Marantz  
 Alan and Pauline Marchant  
 Michael Margolis  
 Sylvia Markell  
 Joe and Leah Markovitch  
 Eugene and Karla Marks  
 Shulamit Marson  
 Karen Mason  
 Jonathan Massel  
 Miriam Matoff  
 Ezekiel Mattuck  
 Ann Mayles  
 Dina-Hasida Mercy  
 David and Joyce Merkel  
 Isaac and Bernice Messinger  
 Myra and Allan Meyers  
 Brian and Roberta Mickelson  
 Gerald and Shirley Morris  
 Harold and Florence Morris  
 Larry Moscovitz  
 William and Adella Moscovitz  
 Michael and Gina Moshevich  
 Howard and Terrie Moss  
 Rita Nachmann  
 Dora Nagel  
 Sidney and Lois Nathanson  
 Mayer and Heather Nelken  
 Lillian Nemetz  
 Linda Nimmerrichter  
 Abraham and Esther Nobleman  
 Jakob Nortman  
 Bertha Novak and Family  
 Wendy Oberlander  
 Joan Oppenheimer  
 Chuck and Mikiko Oye  
 Aaron Pelman  
 Solomon and Minnie Pelman  
 Renia Perel  
 Rob Phillips  
 Erica Pinsky  
 Joseph and Alex Polisky  
 Yvette Porte  
 Marion Prasow  
 Sadie Presner  
 Jan Prinzmetal  
 Provincial Employees  
 Community Services  
 Benjamin and Naomi Pulvers  
 Barry and Myrna Rabinowitz  
 Susan Rance  
 Bonnie Reed  
 Issie and Marlene Reisler  
 Rafael Richman  
 Melody and Yoel Robens-Paradise  
 Colin and Michelle Romain  
 Deborah Rootman and Efraim Gavrilovich  
 Shirley Rose  
 Aviva Roseman

Carol Rosengarten  
 Rita Rothstein  
 Bernard and Vera Rozen  
 Ron and Cindy Rozen  
 Sheila Rozen  
 Julian and Lydia Rozental  
 David Rubin  
 Leslie and Anita Rudolph  
 Lillian Russell  
 Jacob and Yael Sachar  
 Glenda Saitowitz  
 Nicole Saitowitz  
 Alma Saltzman  
 Otto and Bernice Salzman  
 Greg and Melanie Samuels  
 Howard and Rosely Samuels  
 Tobie Sandomirsky  
 Edward and Phyllis Sapers  
 Joyce Satanove  
 Bernice Schacter  
 Steven and Donna Schacter  
 Alan and Marion Schapiro  
 Stephen Schertzer and Ruth Wingerin  
 Dan and Dana Schlanger  
 Sondra Schloss  
 Irma Schneider  
 Mel and Reisa Schneider  
 Reisa Schneider  
 Freda Schriman  
 Eduardo Schwartz  
 Olga Schwartz  
 Frank and Blanche Segal  
 Samuel Segal  
 Darrel and Shana Seskin  
 Yale and Valerie Shap  
 Fay Sherman  
 Carla Shore and Ethan & Kevin McMamara  
 Ralph and Linda Shulman  
 Celia Shuster  
 Bela Siegelstein and Vera Marton  
 Marilee Sigal and Avihu Nachmani  
 Mary-Anne Sigal  
 Barry and Joyce Silverman  
 Rae Simces  
 Zena Simces  
 Lou and Hinda Simkin  
 Sylvain Sinchein and Georgia Nemetz  
 Joseph and Dianne Sinclair  
 Sharon Slutsky  
 Gloria Smith  
 SNC Lavalin Employees  
 Boris and Rita Solodkin  
 Barby Solomon  
 Bronia Sonnenschein  
 Eve and Debby Sonner  
 Ethel Staniloff  
 Margaret Stark  
 Marvin and Lois Stark  
 Daniel Steinberg

Ida Steinberg  
 Ilse Steinberg  
 Julius and Sylvia Steinberg  
 Essie Steinhart  
 Sandra Stern  
 Susan and Marcus Stiller  
 Hy and Lillian Stotland  
 Benno and Ilana Strummer  
 Joan Stuchner  
 Tom Szekely and Janice Masur  
 Alan and Daphne Tapper  
 Levy and Dina Teitlebaum  
 Molly Tenenbaum  
 David and Gwen Tessler  
 Larry and Lyliane Thal  
 Evelyn Toban  
 Milton and Jacqueline Toft  
 Cliff and Sandra Ungar  
 Dailia Van Haren  
 Peter and Lisa Vernon  
 Barney and Ruth Vinegar  
 Jennifer Virtue  
 Shlomo and Dina Wachtel  
 Leonard and Brenda Wall  
 Miriam Warren  
 Joe Weinberg  
 Darryl Weinbren  
 Elsa Weinstein  
 Les and Phyllis Weinstein  
 Malcolm and Judy Weinstein  
 Leslie Wener  
 Jon Wennevold  
 George and Frieda Wertman  
 Joseph Whitman and Ruth Wittman  
 Sherri Wise  
 Sandy and Barbara Wohl  
 Richard and Elizabeth Wolak  
 Isidor and Harriett Wolfe  
 Phil and Corinne Yacht  
 Sandra Yasin and Robert Tolsma  
 David and Elaine Youngson  
 Marc Youngson  
 Sandy Youssiem  
 Jim Zimmerman  
 Abe and Belle Zipursky  
 Irvin and Esther Zipursky  
 Arnie and Harriet Zucker

---

Family Visionary - \$3600+  
 Visionary - \$1000-\$3599  
 Champion - \$500-\$999  
 Guardian - \$250-\$499  
 Advocate - \$180-\$249  
 Companion - \$100-\$179  
 Partner - \$50-\$99  
 Friend - Up to \$49

# Volunteers

Arliss Altman  
 Merle Ames  
 Surella Ames  
 Alon Amit  
 Rina & Yosi Amit  
 Tami Amit  
 Eric Andrew  
 George & Linda Arato  
 Valeriy Arustamov  
 Shayla Atnikov  
 Rita Axelrod  
 Hildy Barnett  
 Larry Barzelai  
 Emily Bashah  
 Miryana Bayerthal  
 Paul Becker  
 Robert Beckman  
 Bev Behrman  
 Elliot Belkin  
 Bonnie Belzberg  
 David Benbaruj  
 Izak Benbasat  
 Hilary Benson  
 Esther Berenbaum  
 Yuval Berger  
 Shelly Berkow  
 Jonathan Berkowitz  
 Kristina Berman  
 Larry & Jodi Bloom  
 Amalia Boe  
 Bunny Braverman  
 Rob Bergida  
 Cathy Bregman  
 Beverley Brezer  
 Azima Buell  
 Alison Brook  
 Paula Brook  
 Ros Calof  
 Warren Cameron  
 Penny Carter  
 Bill Cates  
 Dhorrea Challmie  
 Marilyn Chandler  
 Elaine Charkow  
 Ron Charnaw  
 Sandy Chernoff  
 Karena Chernyavskaya  
 Linda Civkin  
 Keitha Coates  
 Daniel Coblin  
 Dave Coblin  
 Barbara Cohen  
 Charlotte Cohen  
 Frances Cohen  
 Lianne Cohen  
 Sandra Cohen  
 Saul Cohn  
 Bev, Josh & Brian Corber  
 Harriett Corda  
 Brenda Curtis  
 Rhoda & Irving Dardick  
 Marcy & Shabi Dayan & Family  
 Iris Dayson  
 Jeremiah DeSousa  
 Reesa Devlin  
 Marian Dewit  
 Reva Dexter  
 Jill Diamond  
 Jodi Diamond  
 Lynette Dian  
 Sharon Dinur  
 Carla Dodek  
 Michelle Dodek  
 Irina Dordjjeva  
 Sasha Dordjjeva  
 Celina Dunn  
 Barry Dunner  
 Yonah Dwor  
 Diane & Eugene Edelman  
 Roxanne Eichhorn  
 If'at Eilon-Heiber  
 David Emanuel

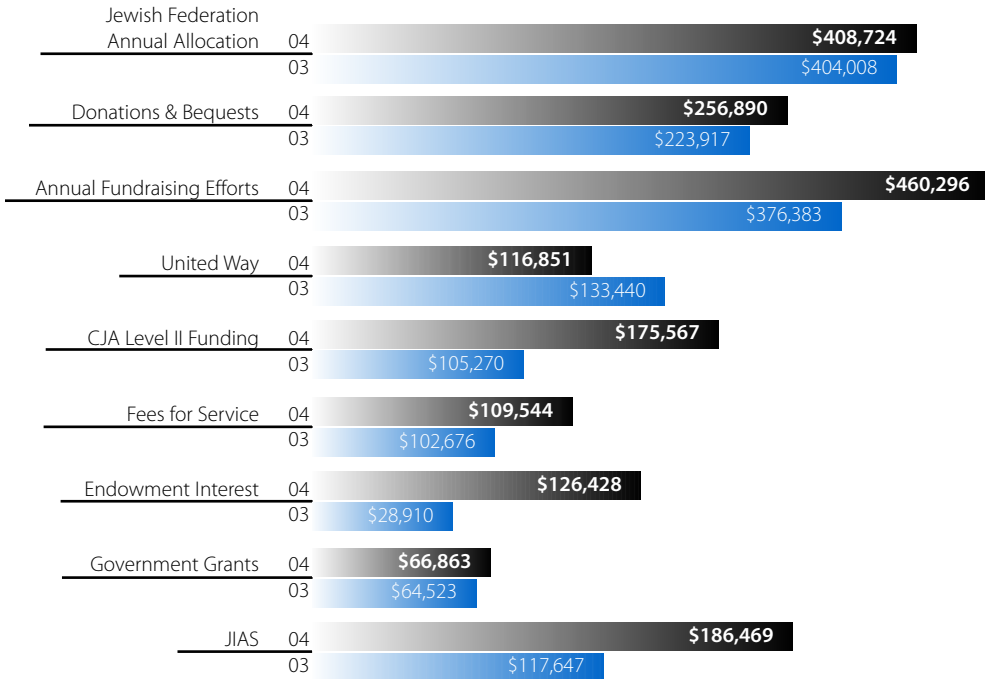
Marc Estrin  
 Tzvia Estrin  
 Alison Ezekiel  
 Michelle Ezekiel  
 Garry Feindstadt  
 Tessie Finkelstein  
 Norty Finkelstein  
 Harry Fischer  
 Su T Fitterman  
 Stephen Fitterman  
 Paulette Fishman  
 Melanie Fleisher  
 Jack Fraeme  
 Naomi Frankenburg  
 David & Deborah Freedman  
 Irwin Freedman  
 Patricia Fridman  
 Carol Ann Fried  
 Phillipa Friedland  
 Diane Friedman  
 Cheyl Fryfield  
 Lillian Fryfield  
 Morry Gaerber  
 Stephen Gaerber  
 Bernie Geffin  
 Ethel Gelfand  
 Mark & Corinne Gelfer & Family  
 Laverne Gelman  
 Rachel Gelman  
 Eleonora Gempel  
 Sheila Gendis  
 Arlene Gladstone  
 Bea Goldberg  
 Fran Goldberg  
 Reita Goldberg  
 Viva Goldblatt  
 Tanis Goldman  
 Dora Golden  
 Galit Goldin  
 Gita Golub  
 Claire & Arnold Golumbia  
 Marla Gordon  
 Effie Gordon  
 Morry Grand  
 Lorne Greenberg  
 Naomi Greenberg  
 Naomi Gropper  
 Jan Gronlund  
 Dan Gumprich  
 Len Halprin  
 Joshua Hauser  
 Oz Havusha  
 Gloria Hendin  
 Carol Henriquez  
 Joe Herman  
 Anne Hersh  
 Carol Henriquez  
 Susan Hilton  
 Pat Hofman  
 Lanny Jackson  
 Kathy Jones & Family  
 Eleanor Josephs  
 Joseph Kahn-Tietz & Family  
 Lynn Kagan  
 Andy Katz  
 Bill Katz  
 Jeremiah & Marni Katz  
 Barry & Charlotte Katzen & Family  
 Penny Keene  
 Gregory Khmelnitsky  
 Michael & Melanie  
 Kierszenblat  
 Gerry Kline  
 Elaine Kliner  
 Rick Kohn  
 Jennifer Kolarik  
 Henry Kon  
 Beverley Kort  
 Alana Korsunsky  
 Harriet Kositky  
 Ori Kowarsky

Jean Kramer  
 Michael Kramer  
 Marilyn Krieger  
 Art Kushner  
 Arwen Kuttner  
 Mendy Landa  
 Jonathan Lander  
 Bill Levine  
 Lani Levine  
 Karen Levitt  
 Beryl Libin  
 Shlomo Laniado  
 Irving & Naomi Laskin & Family  
 Danny Laufer  
 Gisa Lazlow  
 Gaynor Levin  
 Lani Levine  
 Ann Levi-Lloyd  
 Marc Levine & Family  
 Lani Levine  
 Yvonne Levinkind  
 Ilana Leviton  
 Dan Levitt  
 Gisi Levitt  
 Karen Levitt  
 David & Shari Linde  
 Anatoly Linderman  
 Sarah Lipetz  
 Jack Lutsky  
 Ezra Mandel  
 Heidi Mannis  
 Humberto Marin  
 Stella Mattuck  
 Wendy Sabina Mayer  
 Micha Menzcer  
 Karen & Jack Micner  
 Dorothy Miller  
 Ruth Mitchell  
 Florence Morris  
 Larissa Mouline  
 Sandi Moussadji & Family  
 Ron Nacht  
 Michael Niskine  
 Irving Nitkin  
 Elena Novikova  
 Judy Oberlander  
 Tabala Oreck  
 Anita Ornstein  
 Felicia Oshry  
 Dina Orloff  
 Norm & Lola Power  
 Daniel Peiser  
 Charles Pelosof  
 Henry Peritz  
 Bev Phillip  
 Malcolm Pinteau  
 Bev Polsky  
 Jude Polsky  
 Mara Polsky  
 Sylvia Polsky  
 Sadie Presner  
 Naomi Price  
 Lew & Nora Pullmer & Family  
 Doug Pulver  
 Esther Rabinovitch  
 Stan Radomsky  
 Deborah & Dan Ramm-West  
 Nancy Raphael  
 Eppie Rapparport  
 Hindy Ratner  
 Donna Riback  
 Larry Rice  
 Nancy Richler  
 Lianne Ritch  
 Selina Robinson  
 Vicki Robinson  
 Deborah Roitberg  
 Michelle Romain  
 Vivian Rootman  
 Shirley Rose  
 Joshua & Janet Rosen & Family

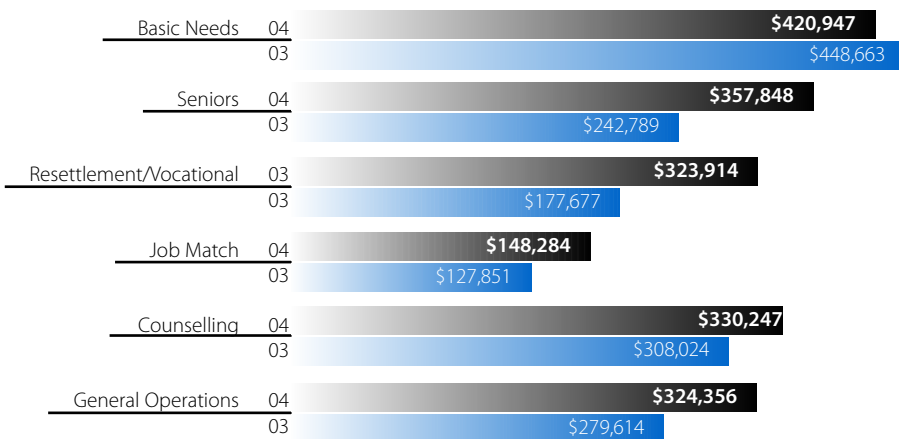
Doreen Rosenhek  
 Mark Rosengarten  
 Molly Ross  
 Raziel Ross  
 Eddie Rothman  
 Ernest Rothschild  
 Debbie Rozenberg  
 Mark & Lynn Rozenberg & Family  
 Barbara Rubanenko  
 Inessa & Roman Rubin  
 David Sacks  
 Leyla Sacks  
 Louis Saitowitz  
 Greg and Melanie Samuels  
 Sandy Sandomirsky  
 Bert Schachter  
 Stephen Schacter  
 Harvey Shafer  
 Sidi Schaffer  
 Ophira Schwartzfeld  
 Ken Schneider  
 Roger Seelig  
 Bat-Ami Segal  
 Binki Segal  
 Paula Segal  
 Friedah Segal  
 Bob Seligman  
 Arnold Selwyn  
 Allan & Mindy Seltzer  
 Bradley Seskin  
 Shana Seskin  
 Zev Shafran  
 Elayne Shapray  
 Elizabeth Shefrin  
 Cigal Shene  
 Yudis Shtrambrant  
 Ruthie Shugarman  
 Neil Simces  
 Ross Singer  
 John Silver  
 Marsha & Al Simmons  
 Heather Sirlin  
 Georges Sommer  
 Svetlana Sosnova  
 Joseph & Karen Suskin  
 Rhoda Tafler  
 Reena Taviss  
 Andrew Thom  
 Pamela Tiggelers  
 Aron & Neri Tischler & Family  
 Benjamin Title  
 Mila Umansky  
 Miriam Vale  
 Salley Veiner  
 Marcia Vineberg  
 Irwin Vinegar  
 Larry & Marcy Vinegar & Family  
 Lyn and Allan York  
 Brenda Wall  
 Jimmie White  
 Norma Winrob  
 Sherry Wasserman  
 Danny Waterman  
 Analee Weinberger  
 Natalie Weinstein  
 Ted Wenner  
 Len Wise  
 Jeffrey & Jane Witten  
 Tom & Cheryl Wollner  
 Stephen & Jenny Wright & Family  
 Melanie Yearow  
 Bella Zaidel  
 Lianne Zaitzow  
 Svetlana Zazulina  
 Joy Zien  
 Larisa Zilberg  
 Keegan Zlotnik



# Financials



**Total Revenues 2004: \$1,907,632**  
 Total Revenues 2003: \$1,556,774



**Total Expenditures 2004: \$1,905,596**  
 Total Expenditures 2003: \$1,584,617





Jewish Family Service Agency  
300 - 950 West 41 Avenue, Vancouver, BC V5Z 2N7  
tel. 604.257.5151 fax. 604.257.5148 [www.jfsa.ca](http://www.jfsa.ca)